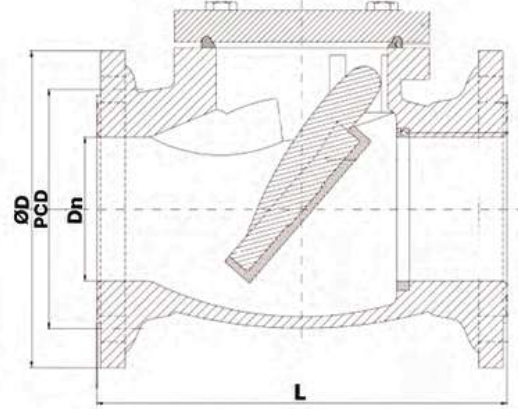
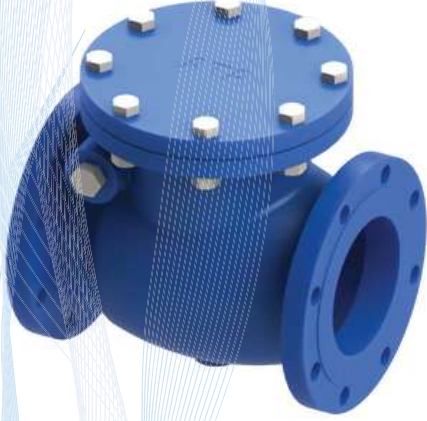


Çalpara Çek Valf PN16 / Swing Check Valve PN16



ATAVALVE

PARÇA ADI PART NAME	MALZEME MATERIAL
GÖVDE / BODY	GG25 / GGG 40.3
SÜRGÜ / WEDGE	GG25 / GGG 40.3
MİL / STEM	STAINLESS STEEL
SIT / SEAT	BRASS / ALU BRONZE
CONTA / GASKET	NBR / EPDM

SIZE	CODE IMPA	FLANGE ØD	PCD	FACE TO FACE (L)	HOLES
DN40	755911	150	110	180	4 X 18
DN50	755912	165	125	200	4 X 18
DN65	755913	185	145	240	4 X 18
DN80	755914	200	160	260	8 X 18
DN100	755915	220	180	300	8 X 18
DN125	755916	250	210	350	8 X 18
DN150	755917	285	240	400	8 X 22
DN200	755918	340	295	500	12 X 22
DN250	755919	405	355	600	12 X 26

